

Ventspils VATP-6 stāvlaukums

Installation : Apgaismojums

Project number : 5

Customer : VPBP

Processed by : Auseklis Mūzis

Date : 20.03.2018

The following values are based on exact calculations on calibrated lamps, luminaires and their arrangement. In practice, gradual divergences can occur.

Guarantee claims for luminaire data are excluded.

Relux and the luminaire manufacturers accept no liability for consequential damage and damage which is occasioned to the user or to third parties.

Object : Ventspils VATP-6 stāvlaukums
Installation : Apgaismojums
Project number : 5
Date : 20.03.2018

RELUX®

1 Luminaire data

1.1 VIZULO STORK 68W IP66 ... (VIZULO_STORK_ME...)

1.1.1 Data sheet

VIZULO_STORK_ME_68W_IP66_6900Lm.ies

VIZULO STORK 68W IP66 6900Lm

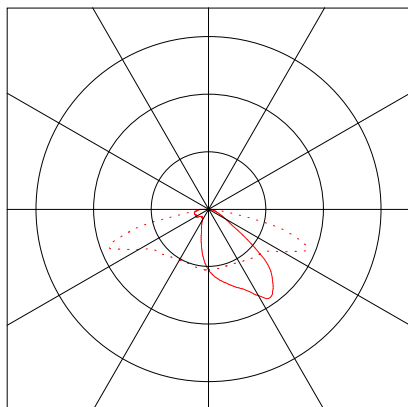
Luminaire data

Luminaire efficiency : 94%
Luminaire efficacy : 101.46 lm/W
Classification : A30 99.9% ↑ 0.1%
CIE Flux Codes : 32 64 92 100 94
UGR 4H 8H : 39.4 / 48.4
Power : 68 W
Luminous flux : 6899.6 lm

Equipped with

Quantity : 1
Designation : NICHIA_N383
Colour :
Luminous flux : 7340 lm

Dimensions : 50 mm x 50 mm x 1 mm



Object : Ventspils VATP-6 stāvlaukums
Installation : Apgaismojums
Project number : 5
Date : 20.03.2018

RELUX®

1 Luminaire data

1.2 MRS 052 730 L03 A024 S... (Mini Martin 52 ...)

1.2.1 Data sheet

Mini Martin 52 W 24 LEDs

MRS 052 730 L03 A024 SN DG1_O60_Bin-N3_TH

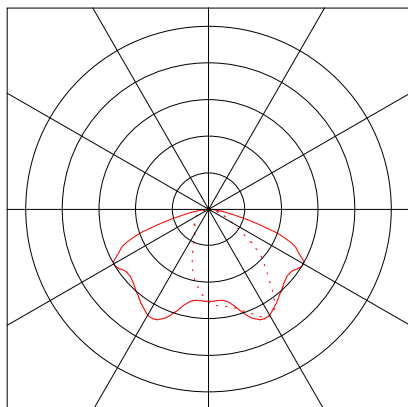
Luminaire data

Absolute Photometry
Luminaire efficacy : 118.85 lm/W
Classification : A30 100.0% ↑0.0%
CIE Flux Codes : 40 72 96 100 100
Glare : G*2 / D2
Power : 52 W
Luminous flux : 6180.2 lm

Equipped with

Quantity : 1
Designation : 24 LEDs bin N3
Colour : 3000 K
Colour reproduction : 72

Dimensions : 520 mm x 220 mm x 90 mm



Object : Ventspils VATP-6 stāvlaukums
Installation : Apgaismojums
Project number : 5
Date : 20.03.2018

RELUX®

1 Luminaire data

1.3 SRL 076 730 L02 B048 S... (Stork Little Br...)

1.3.1 Data sheet

Stork Little Brother 76 W 48 LEDs

SRL 076 730 L02 B048 SN DG1_O90_Bin-N2_TH

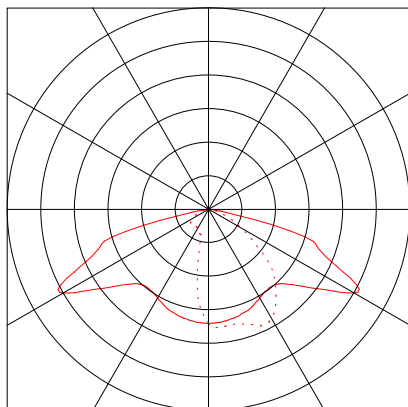
Luminaire data

Absolute Photometry
Luminaire efficacy : 126.08 lm/W
Classification : A30 100.0% ↑0.0%
CIE Flux Codes : 38 72 97 100 100
Glare : G*4 / D4
Power : 76 W
Luminous flux : 9582.4 lm

Equipped with

Quantity : 1
Designation : 48 LEDs bin N2
Colour : 3000 K
Colour reproduction : 72

Dimensions : 665 mm x 280 mm x 85 mm



Object : Ventspils VATP-6 stāvlaukums
Installation : Apgaismojums
Project number : 5
Date : 20.03.2018

RELUX®

1 Luminaire data

1.4 Philips Lighting, SGP340 PC 1xCDO-TTP70W EB TP P5X_828 ()

1.4.1 Data sheet

Manufacturer: Philips Lighting

other SGP340 PC 1xCDO-TTP70W EB TP P5X_828

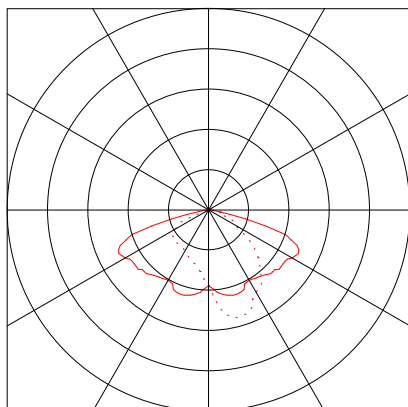
Luminaire data

Luminaire efficiency : 82%
Luminaire efficacy : 77.85 lm/W
Classification : A30 99.7% ↑0.3%
CIE Flux Codes : 39 73 97 100 82
Glare : G*3 / D6
Power : 79 W
Luminous flux : 6150 lm

Equipped with

Quantity : 1
Designation : CDO-TTP70W/8
28
Colour : 828
Luminous flux : 7500 lm

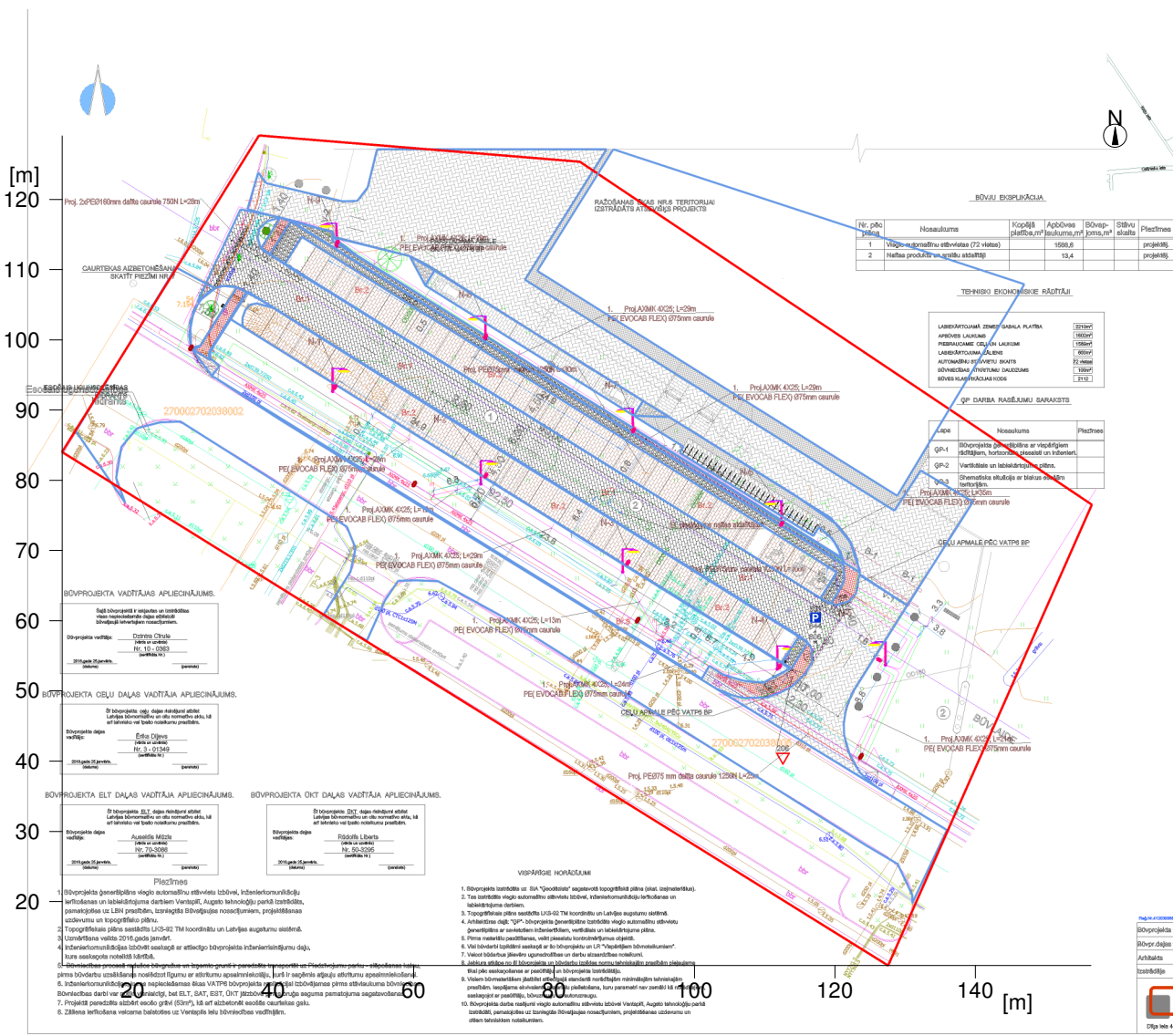
Dimensions : 749 mm x 321 mm x 268 mm



2 Stāvlaukuma apgaismojums

2.1 Description, Stāvlaukuma apgaismojums

2.1.1 Floor plan

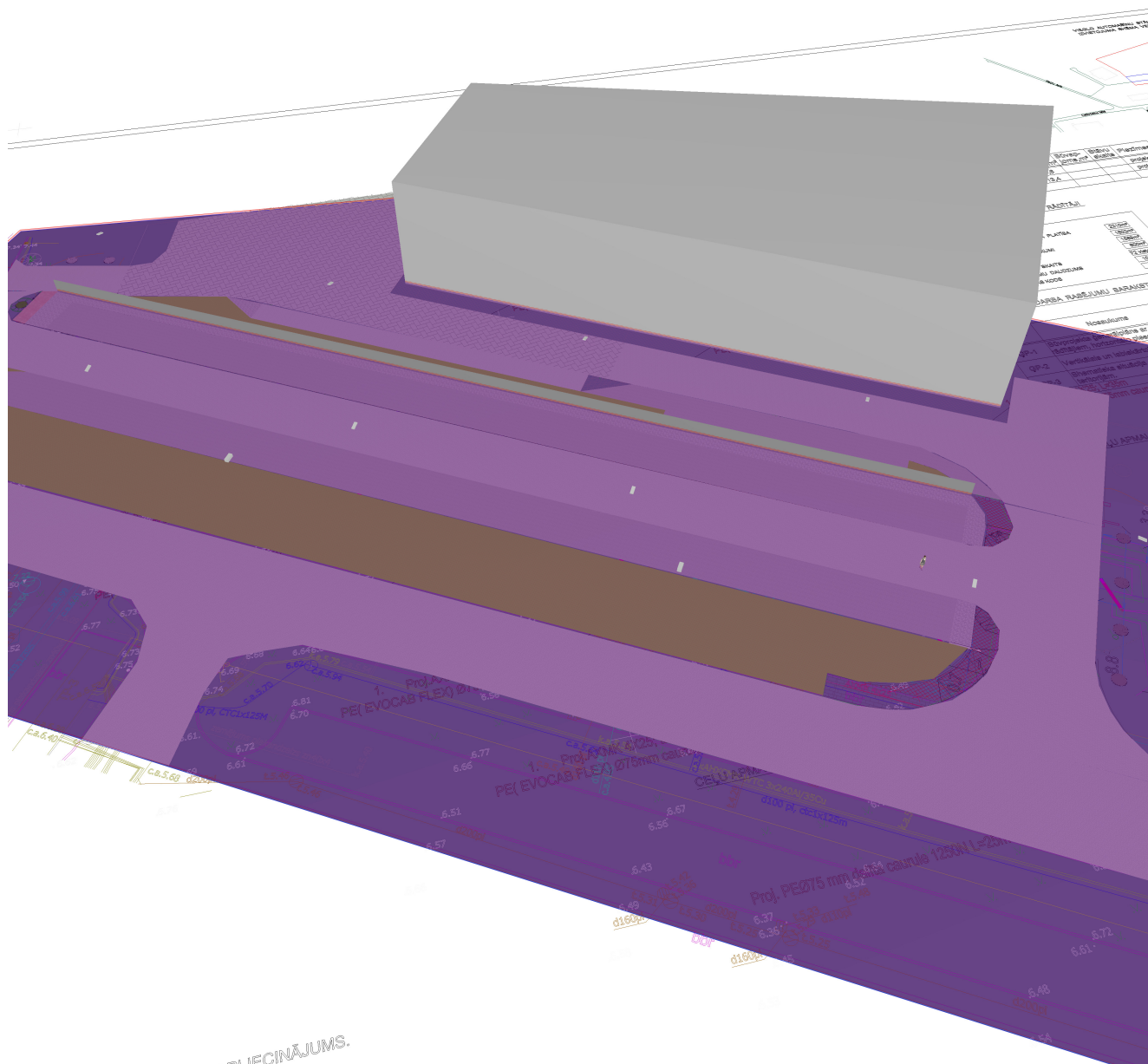


Object : Ventspils VATP-6 stāvlaukums
Installation : Apgaismojums
Project number : 5
Date : 20.03.2018

RELUX®

2.1 Description, Stāvlaukuma apgaismojums

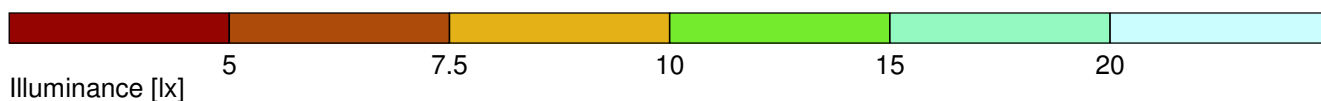
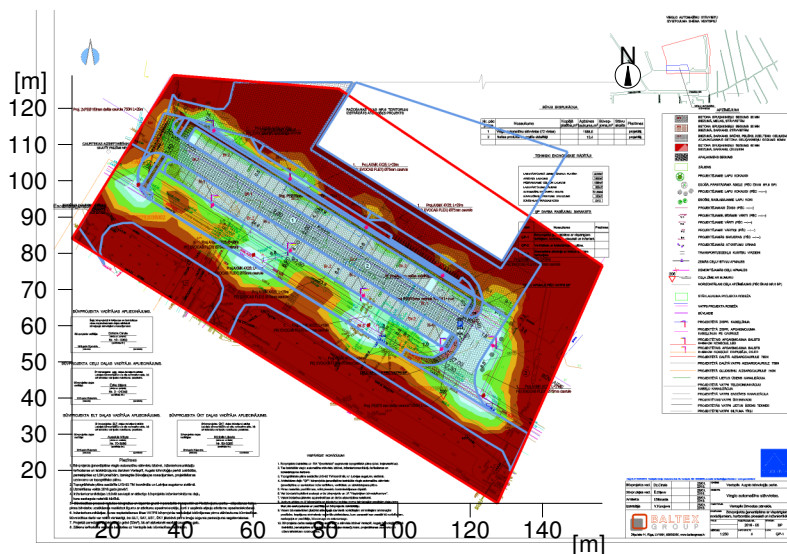
2.1.2 3D view, View 2



2 Stāvlaukuma apgaismojums

2.2 Summary, Stāvlaukuma apgaismojums

2.2.1 Result overview, Evaluation area 1



General

Calculation algorithm used
 Maintenance factor

Average indirect fraction
 0.80

Total luminous flux of all lamps

116241.60 lm

Total power

1000.0 W

Total power per area (9297.61 m²)

0.11 W/m² (1.14 W/m²/100lx)

Evaluation area 1

Reference plane 1.1

Em

Horizontal

Emin

9.44 lx

Emin/Eav (Uo)

0.08 lx

Emin/Emax (Ud)

0.01

Position

0.00

0.20 m

Type No. Make

4

9

Order No. : Stork Little Brother 76 W 48 LEDs

Luminaire name : SRL 076 730 L02 B048 SN DG1_O90_Bin-N2_TH

Equipment : 1 x 48 LEDs bin N2 76 W / 9582.4 lm

Philips Lighting

5

4

Order No. :

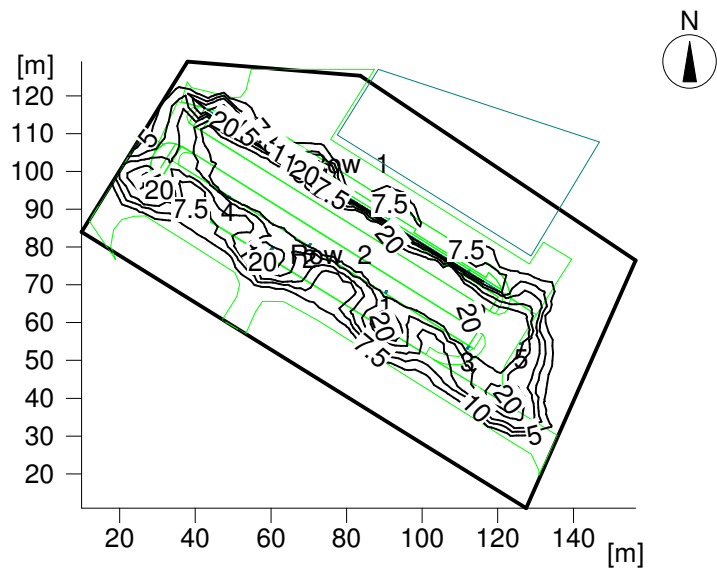
Luminaire name : SGP340 PC 1xCDO-TTP70W EB TP P5X_828

Equipment : 1 x CDO-TTP70W/828 79 W / 7500 lm

2 Stāvlaukuma apgaismojums

2.3 Calculation results, Stāvlaukuma apgaismojums

2.3.1 Isolines representation, Reference plane 1.1 (E)



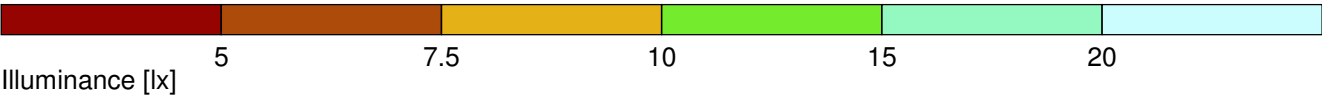
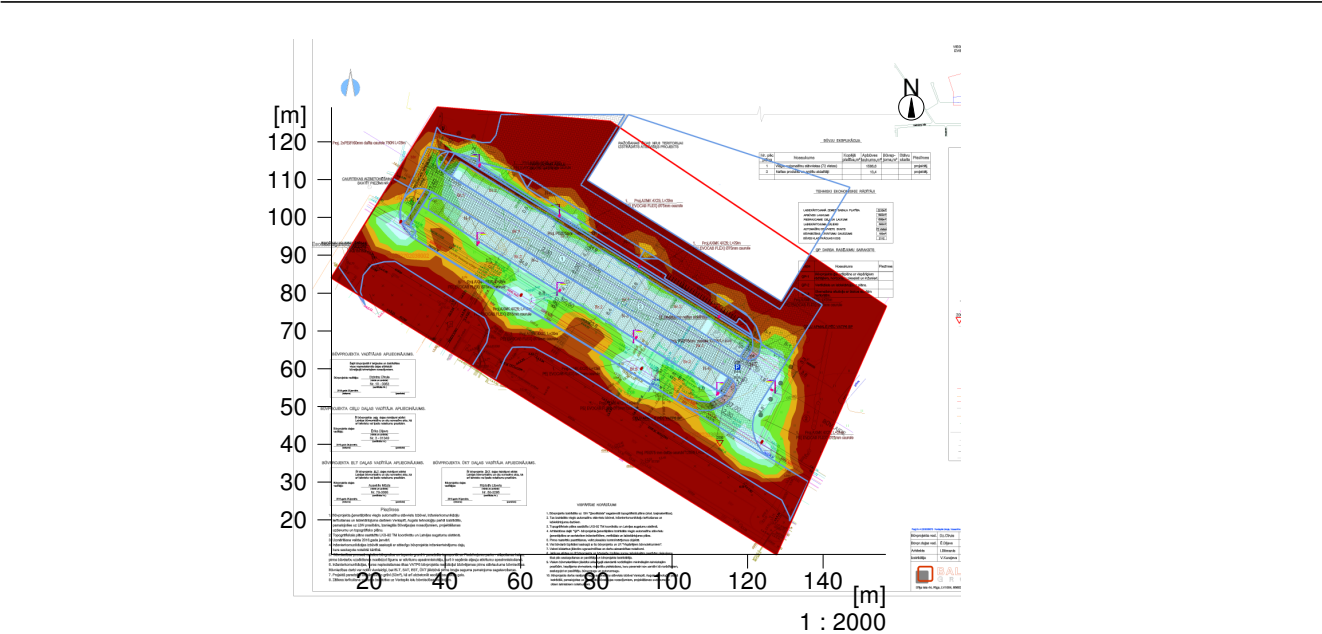
Illuminance [lx]

Height of the reference plane

Average illuminance	Eav	: 0.20 m
Minimum illuminance	Emin	: 9.4 lx
Maximum illuminance	Emax	: 0.1 lx
Uniformity Uo	Emin/Eav	: 41.2 lx
Diversity Ud	Emin/Emax	: 1 : 112.32 (0.01)
		: 1 : 489.54 (0.00)

2.3 Calculation results, Stāvlaukuma apgaismojums

2.3.2 Pseudo colours, Reference plane 1.1 (E)

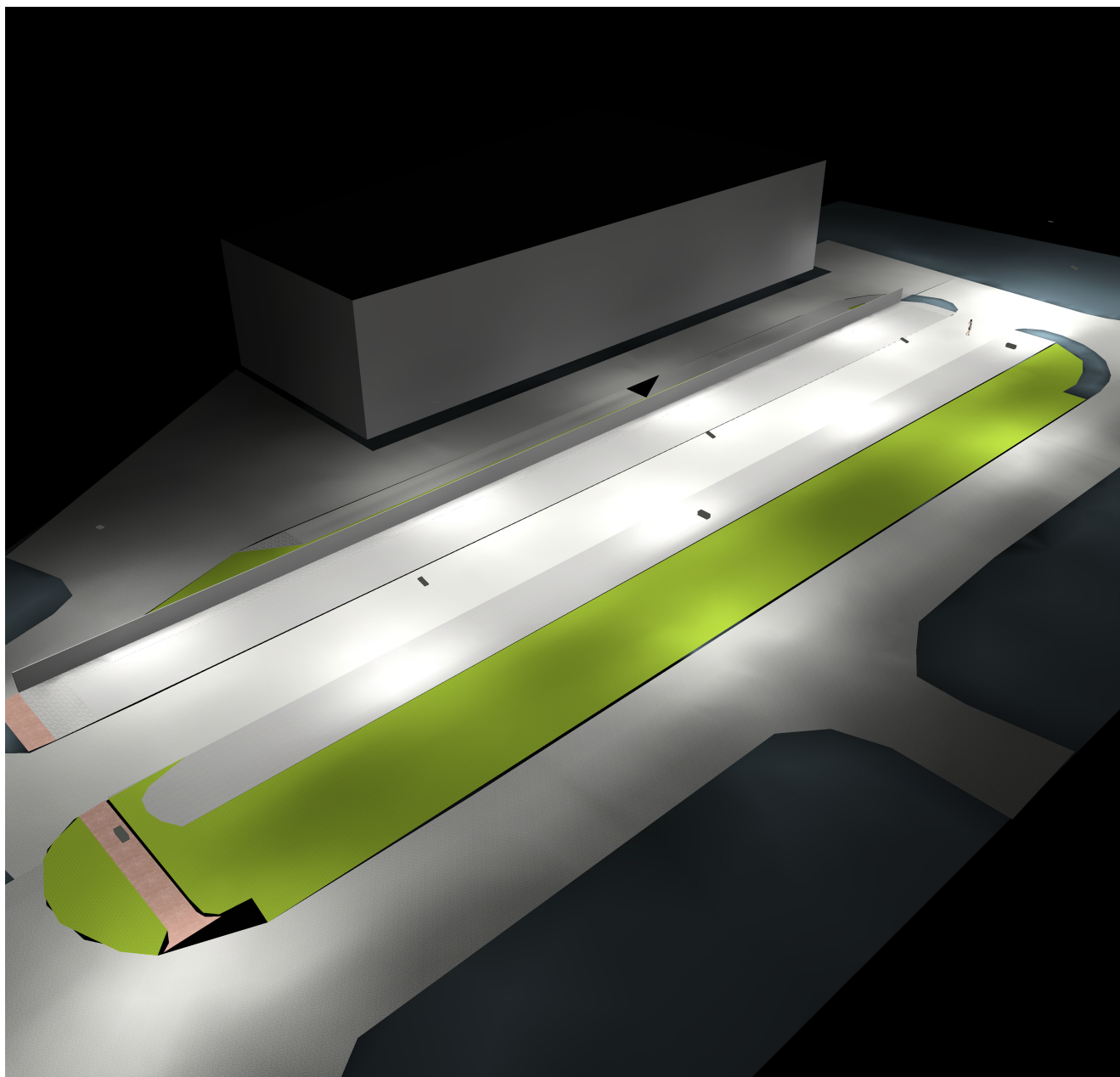


Height of the reference plane

Average illuminance	Eav	: 0.20 m
Minimum illuminance	Emin	: 9.4 lx
Maximum illuminance	Emax	: 0.1 lx
Uniformity Uo	Emin/Eav	: 41.2 lx
Diversity Ud	Emin/Emax	: 1 : 112.32 (0.01)
		: 1 : 489.54 (0.00)

2.3 Calculation results, Stāvlaukuma apgaismojums

2.3.3 3D luminance, View 1



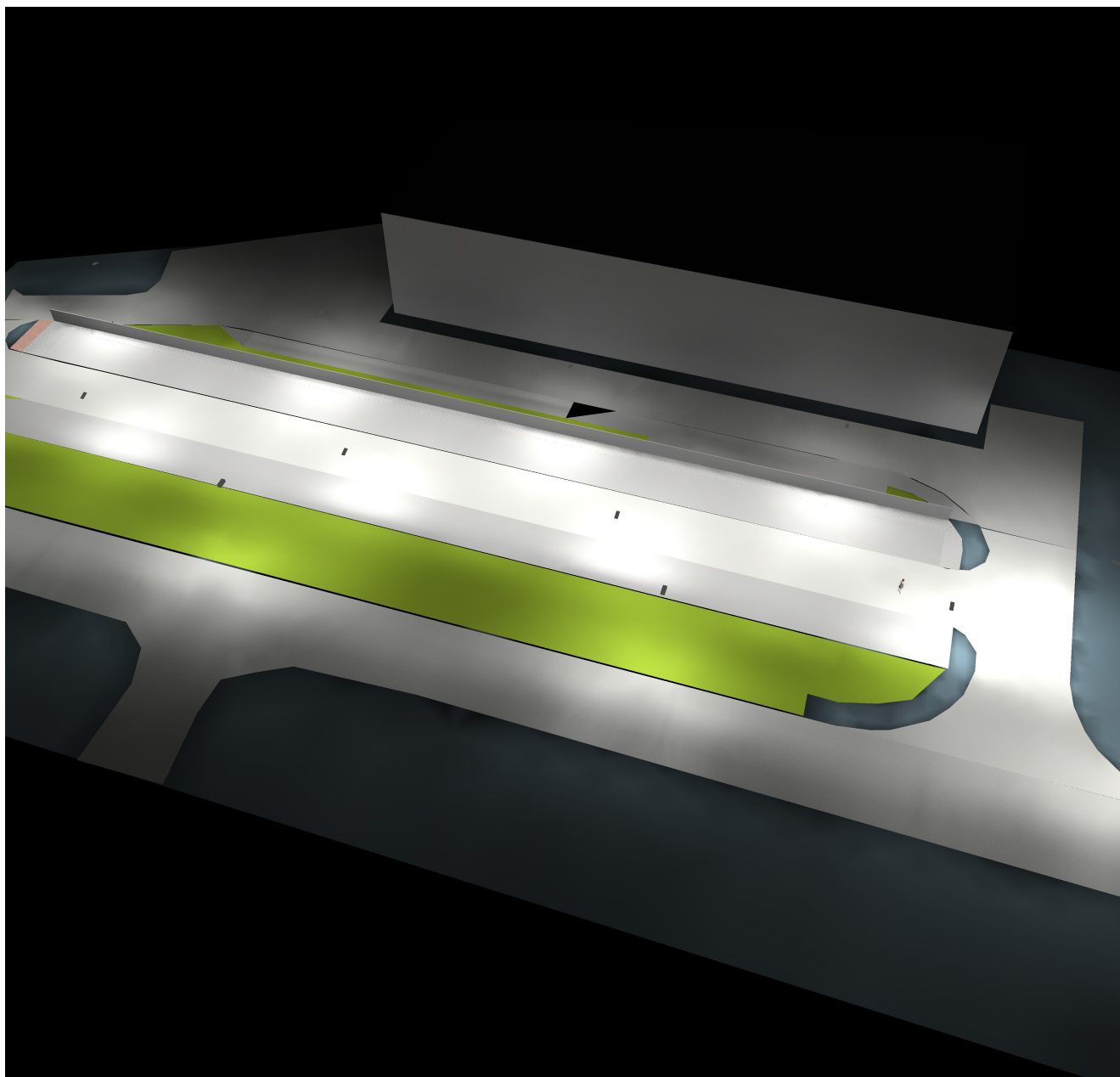
Luminance in the scene

Minimum: : 0 cd/m²

Maximum: : 8.37 cd/m²

2.3 Calculation results, Stāvlaukuma apgaismojums

2.3.4 3D luminance, View 2



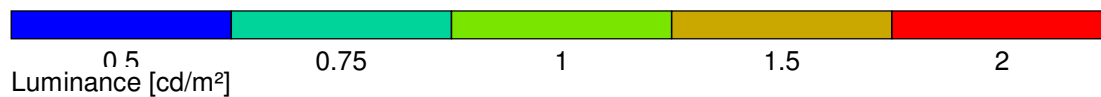
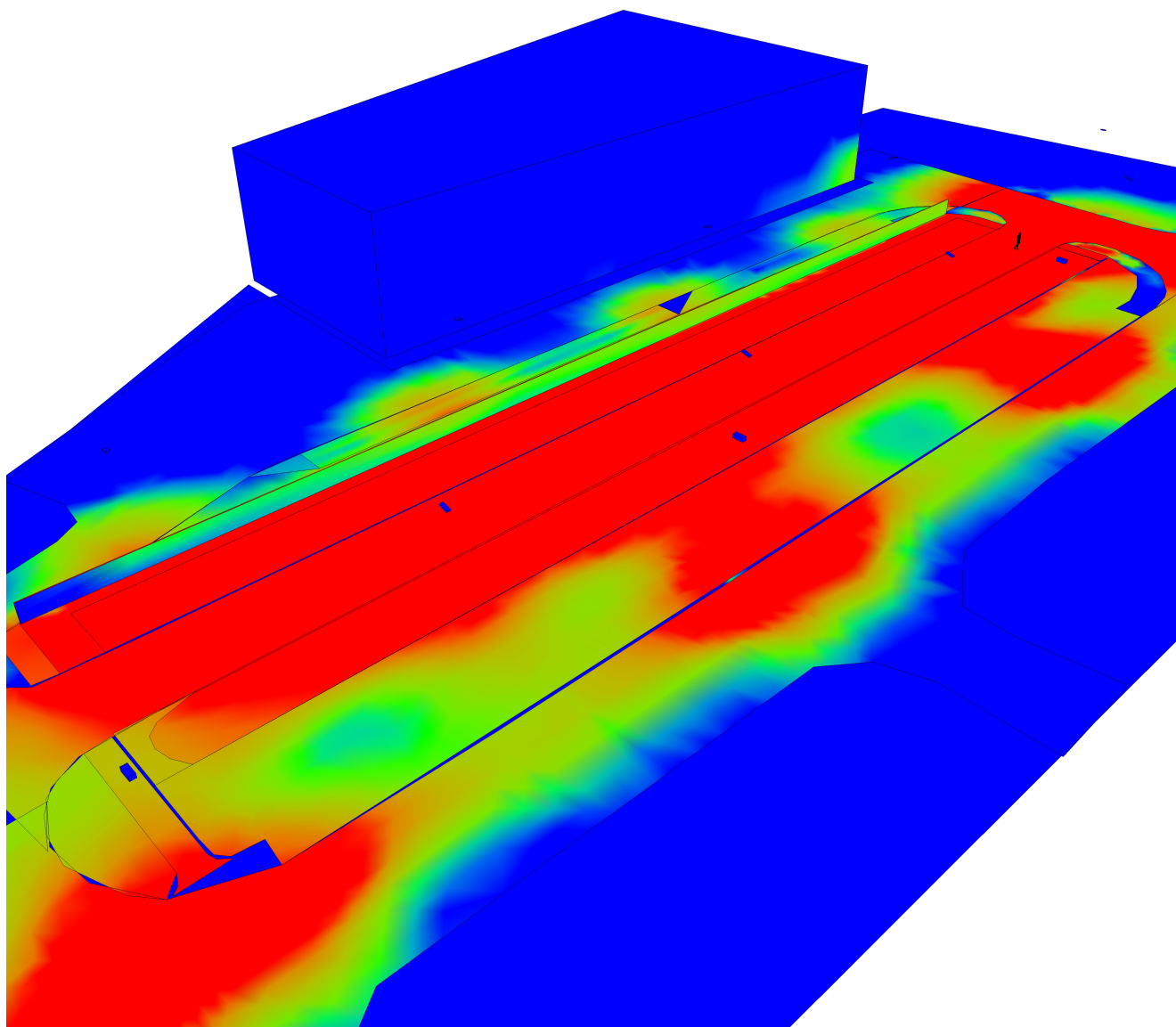
Luminance in the scene

Minimum: : 0 cd/m²

Maximum: : 8.37 cd/m²

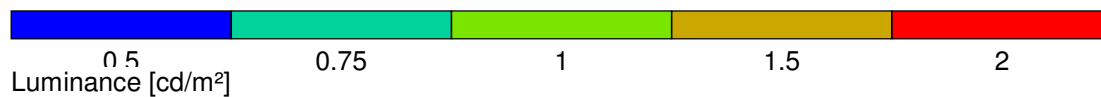
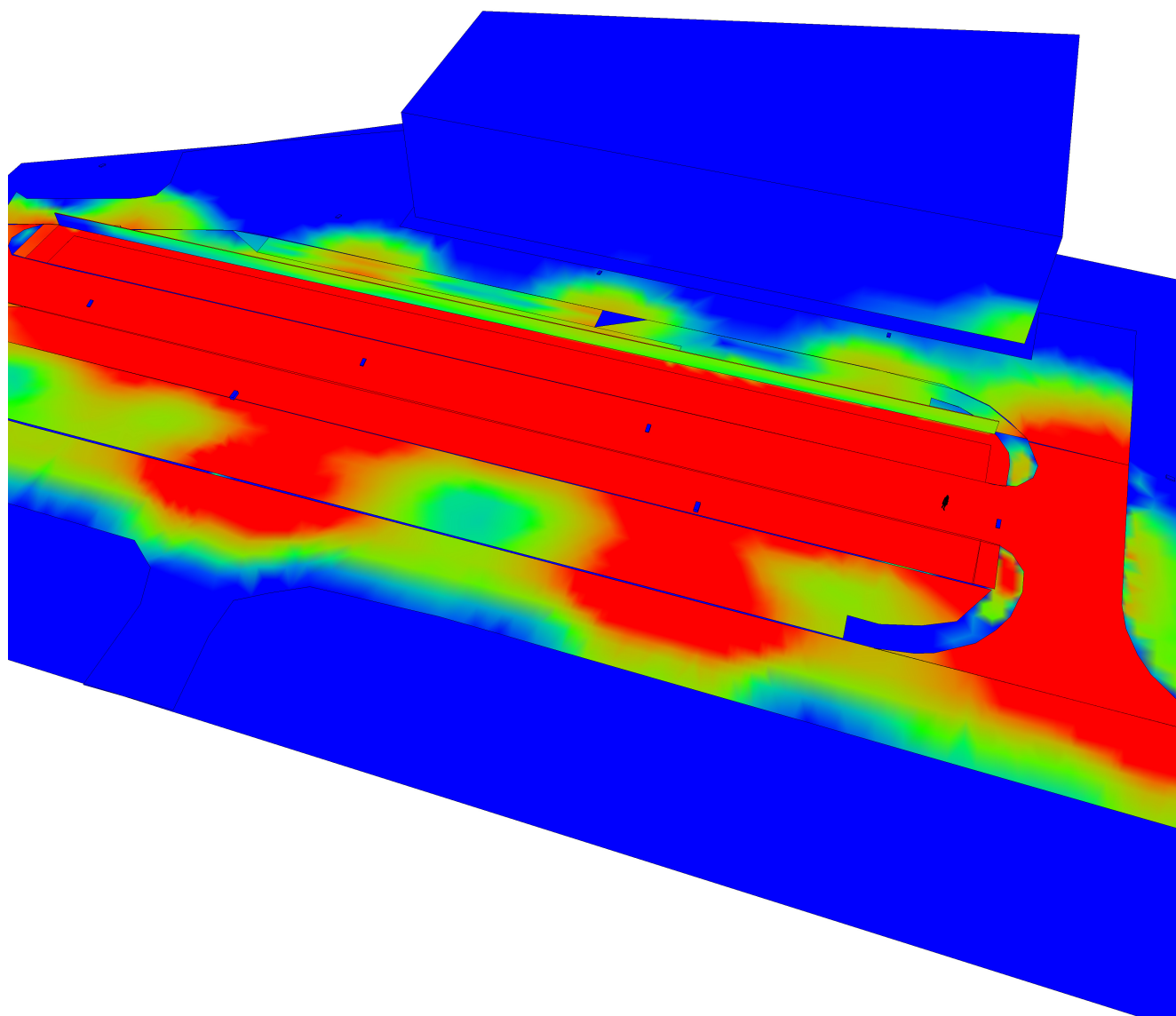
2.3 Calculation results, Stāvlaukuma apgaismojums

2.3.5 3D pseudo colours, View 1 (L)



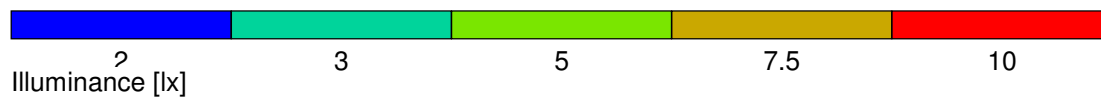
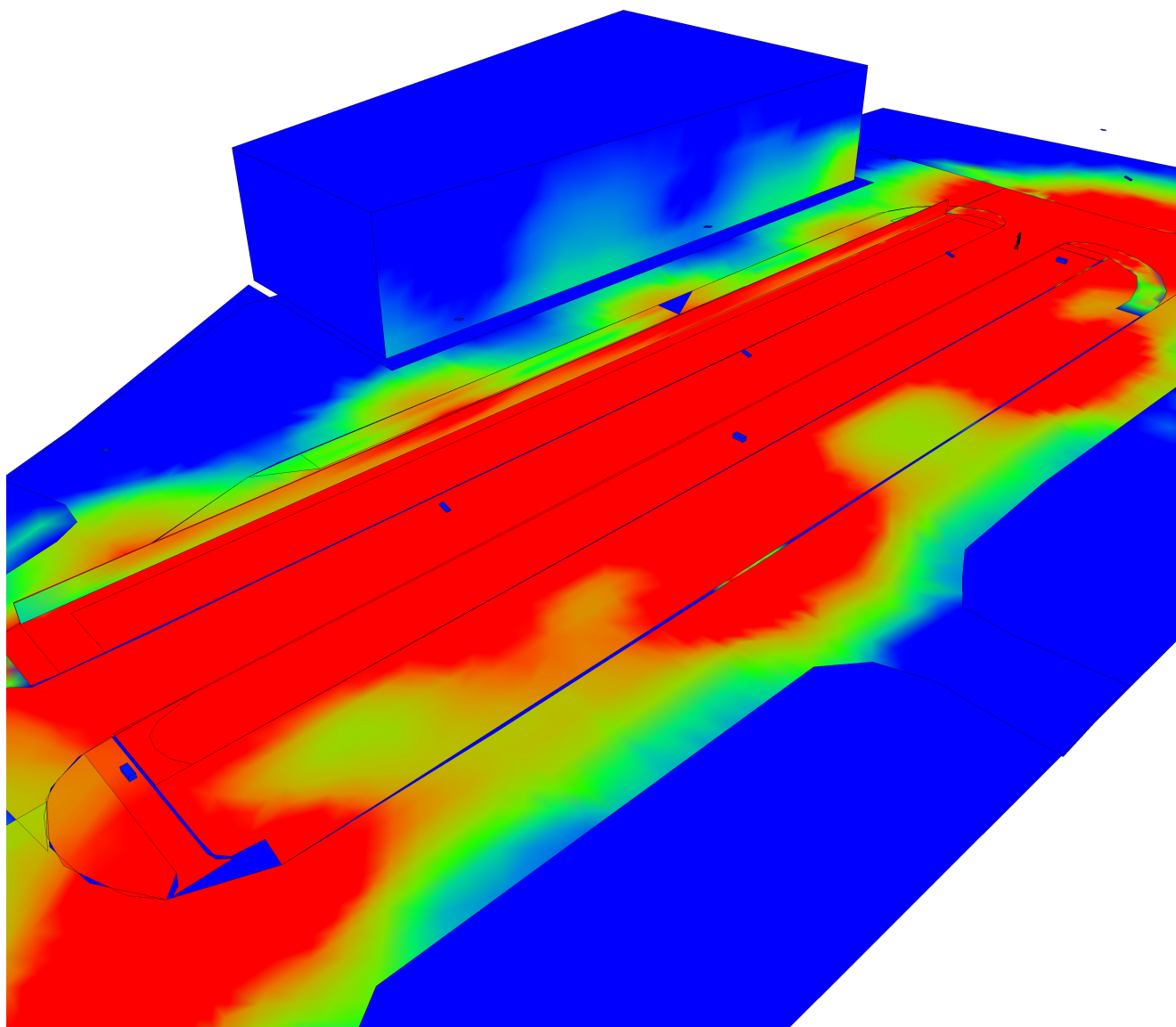
2.3 Calculation results, Stāvlaukuma apgaismojums

2.3.6 3D pseudo colours, View 2 (L)



2.3 Calculation results, Stāvlaukuma apgaismojums

2.3.7 3D pseudo colours, View 1 (E)



2.3 Calculation results, Stāvlaukuma apgaismojums

2.3.8 3D pseudo colours, View 2 (E)

